

Original instructions for hydraulic tire mounting lift



Illustration of hydraulic tire mounting lift (Photo)




Before operating this device the operating instructions must be thoroughly read and observed. For later use this manual should be kept.

Table of contents

<u>1. THIS INSTRUCTION MANUAL AND SYMBOL DESCRIPTION</u>	<u>3</u>
1.1 INFORMATION IN THIS MANUAL	3
1.2 SAFETY LABELING	3
<u>2. SAFETY AND ACCIDENT PREVENTION REGULATIONS</u>	<u>4</u>
2.1 GENERAL SAFETY	4
2.2 ACTIVITY SPECIFIC MEASURES	5
<u>3. SPECIFICATIONS</u>	<u>5</u>
3.1. INTENDED USE	5
3.2. TECHNICAL SPECIFICATIONS	5
3.3. COMPONENT DESCRIPTION	6
<u>3.4. ASSEMBLY INSTRUCTIONS</u>	<u>7</u>
<u>4. OPERATION OF THE TIRE MOUNTING LIFTER</u>	<u>8</u>
4.1. PREPARATION BEFORE FIRST USE	8
4.2. FILLING OF THE HYDRAULIC CIRCUIT	8
4.3. LIFTING THE TIRES	9
4.4. LOWERING OF THE TIRES	9
<u>5. SERVICE AND MAINTENANCE</u>	<u>9</u>
<u>6. STORAGE AND TRANSPORT</u>	<u>9</u>
<u>7. DISPOSAL</u>	<u>10</u>
<u>8. GUARANTEE</u>	<u>11</u>
<u>THE WARRANTY CONDITIONS OF THE COMPANY WILHELM FRICKE SE APPLY, WHICH CAN BE FOUND IN THE SALES DOCUMENTS AND THE CURRENT VERSION OF THE TERMS AND CONDITIONS.</u>	<u>11</u>
<u>FOR QUESTIONS, PLEASE CONTACT THE COMPANY'S CUSTOMER SERVICE LINE</u>	<u>11</u>
<u>9. ADDRESSES</u>	<u>11</u>
<u>10. IMPRINT</u>	<u>11</u>

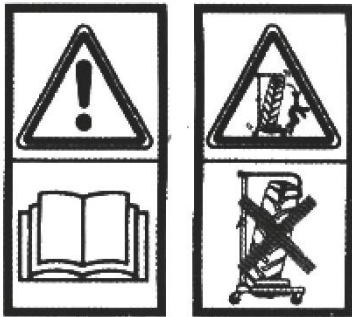
1. This instruction manual and Symbol Description

1.1 Information in this manual

	DANGER	Warning of personal or environmental damage.
	IMPORTANT	Warning of damage.
	NOTE	Additional information.

- Illustrations as numbers (1, 2, 3 ...) refer to the corresponding figures in brackets (1), (2), (3) ... in the neighboring text to item numbers in the tables.
- Instructions, the order of which must be observed, are numbered (1., 2., 3., ...)
- Listings are marked with a dot (•, •, ...)

1.2 Safety labeling



1.

2.



3.



4.

Before starting:

1. Prior to beginning and during maintenance the operating instructions must be observed.

During operation:

2. Risk of unsecured wheels. The operator must ensure that the wheels are properly received and secured.
3. The safety mechanism must be closed before the wheel is moved.
4. There is a risk of falling and spilling. Therefore, the mounting lifter should never be stood or driven on.

2. *Safety and accident prevention regulations*

2.1 General Safety

- The instruction manual has been created so that you can work safely with your device.
- People who do not know the instruction April not operate the device.
- The operation manual must be thoroughly read before operating the device. Pay particular attention to the safety instructions.
- This manual is intended for people with basic technical knowledge of handling devices such as the one described here.
- If you have no experience with such a device, you should first have an experienced person help you.
- Keep all documents supplied with the device, so you can check if necessary. Keep the purchase receipts for any warranty claims.
- If you should lend or sell the device, all the required documents should be given to the person using the device.
- Observe the operating and maintenance instructions, which can be found in this manual.
- Children should be supervised to ensure that they do not play with the device.
- The mechanical maintenance environment at the prescribed intervals and in the prescribed extent.
- After maintenance work all dismantled protective devices must be reassembled professionally. The protection devices and their protection shall be checked before using the device by a competent person.
- For defective devices maintenance orders should be put into place to keep the extent of the damage minimal and not to compromise the safety of the appliance.
- Tire assembly lifter April be used and operated only within the scope specified in these manual conditions.
- Retrofits, changes or modifications to the device are strictly prohibited. A consultation and written approval are required from the importer.
- If during operation (residual) risks and dangers show, which are not described in this manual, the operator is obliged to report this to the importer.
- Never exceed the defined lifting weight for the lifter.
- Check before every use the functionality, you should check in particular the hydraulic oil level and check for possible leaks.
- Under high pressure, escaping fluids (hydraulic oil) can penetrate the skin and cause serious injury! If injured a doctor immediately! Risk of infection!
- Before working on the hydraulic system device, depressurize the system!
- The tire assembly lift must only be set on the tire on the tire.

2.2 Activity Specific Measures



- Scaffolding maintenance and cleaning work is only to be performed when wearing protective gloves in order to prevent injury on sharp-edged instrument parts
- While working with and on the device proper fitting protective work shoes must be worn.
- Before each use, a visual principle and a function control of the device through to identify damaged and worn parts and to arrange for maintenance before commissioning by a trained personnel.
- Before lifting the load, make sure that the drain valve is closed.
- Ensure that the jack is always on a solid and stable base, before the load is lifted.
- Never work under a suspended load, if it is only supported by the jack.
- Lubricate all moving parts regularly on hydraulic jacks.
- When the oil level too low is, before further use, replenish and vent the system. Observe the notes in these instructions!
- The jack must be operated only by persons who have reached the age of 16. An exception is where the use in the course of training to achieve the skill under supervision of an instructor is allowed by a teenager.

3. Specifications

3.1. Intended Use

The hydraulic tire mounting jack is only for the ease of installation of vehicle wheels. Here, the tire dimensions specified in section 3.2 must be observed. Different uses of the application in conjunction with other tire dimensions are considered to be improper. The mounting aid is not suitable for the lifting and moving of raised vehicles.

Failure to comply with the generally accepted rules and the provisions of this manual, including insufficient maintenance, the importer cannot be held responsible for damages.

3.2. Technical Specifications

Maximum lifting capacity	Minimum diameter	Maximum wheel diameter	Maximum wheel width	Weight	Weight (Length, width and height)
1200kg	1000mm	2200mm	800mm	118kg	1300x1015x1500mm

3.3.Component Description

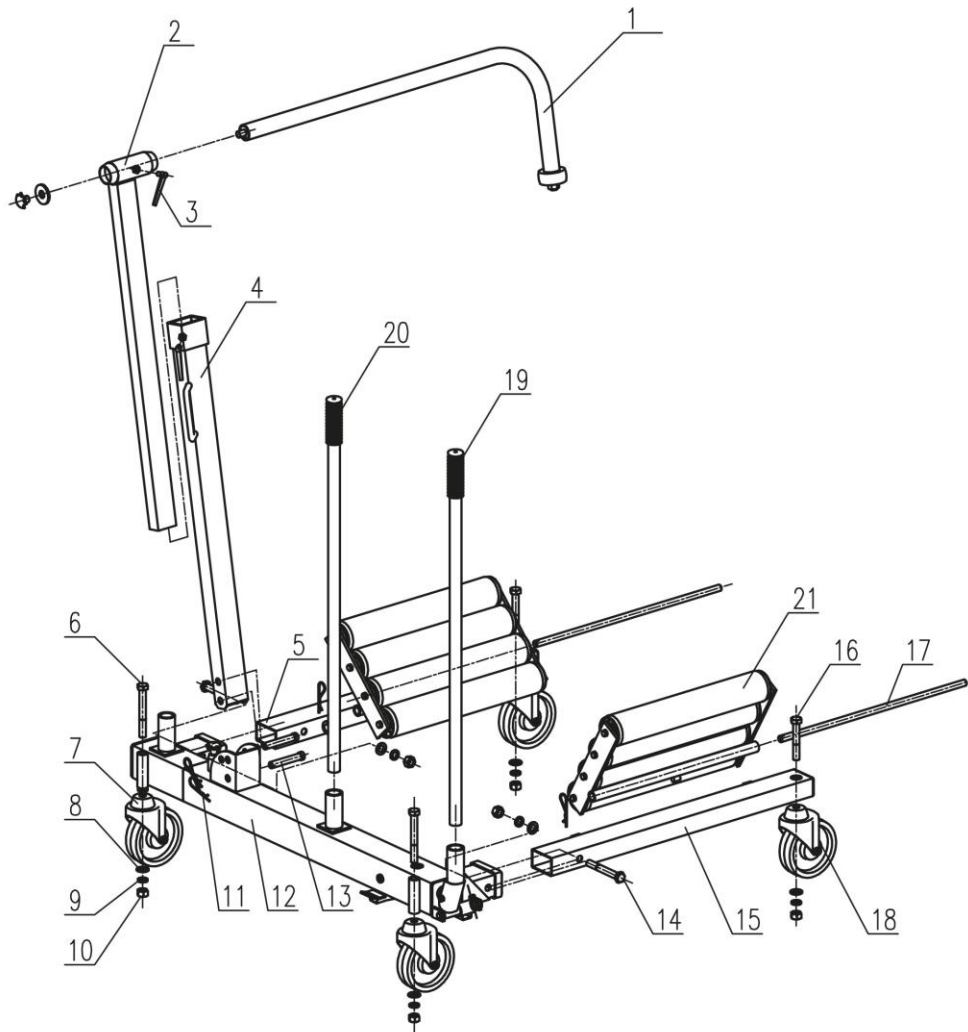


Figure 2
Item List of Spare Parts

Pos	Description	No.	Pos	Description	No.
1	Rim lock	1	12	Frame	1
2	Sliding Bush	1	13	Pen	2
3	Clamping screw	2	14	Screw M16x110	2
4	Guide Tube	1	15	Right Support tube	1
5	Left Support Tube	1	16	Screw M16x100	2
6	Screw M16x100	2	17	Handrail	2
7	Braked castor wheel	2	18	Braked castor wheel	2
8	Washer 16	6	19	Mounting lift	1
9	Lock washer16	6	20	Handle	1
10	Nut M16	6	21	Support rollers	2
11	R-Pin	4			

3.4.Assembly instructions

Check after opening the packing that all components are complete and undamaged. If components are missing or damaged, immediately contact your dealer and use the device only after the device the release by the dealer.

- A. Use the screw (6), washer (8), lock washer (9) and nut (10) to secure the braked castor wheel (7) to the frame (12).
- B. Use the screw (6), washer (8), lock washer (9) and nut (10) to secure the un-braked castors (18) on the left and right support tube (5/15).
- C. Use the screw (14), washer (8), lock washer (9) and nut (10) to secure the left support tube (5) on the frame (12).
- D. Use the screw (14), washer (8), lock washer (9) and nut (10) to secure the right support pipe (15) on the frame (12).
- E. Use the retaining bar (17) and the spring pin (11) to secure the support rollers (21) on the left and right support tube (5/15).
- F. Use to secure the pins (13) and the spring pin (11) to the guide tube (4) on the frame (12).
- G. Define the tire holder (1) with the clamping screw (3) in the plain bearing bush (2).
- H. Fix the slide bearing bush (2) with the clamping screw (3) in the guide tube (4).



DANGER: Observe the assembly sequence and use the supplied material. In case of damage contact prior to use their dealer.



IMPORTANT: Improper installation can function adversely affect and cause malfunctions. Consequences of noncompliance are accidents and damage.

4. Operation of the tire mounting lifter

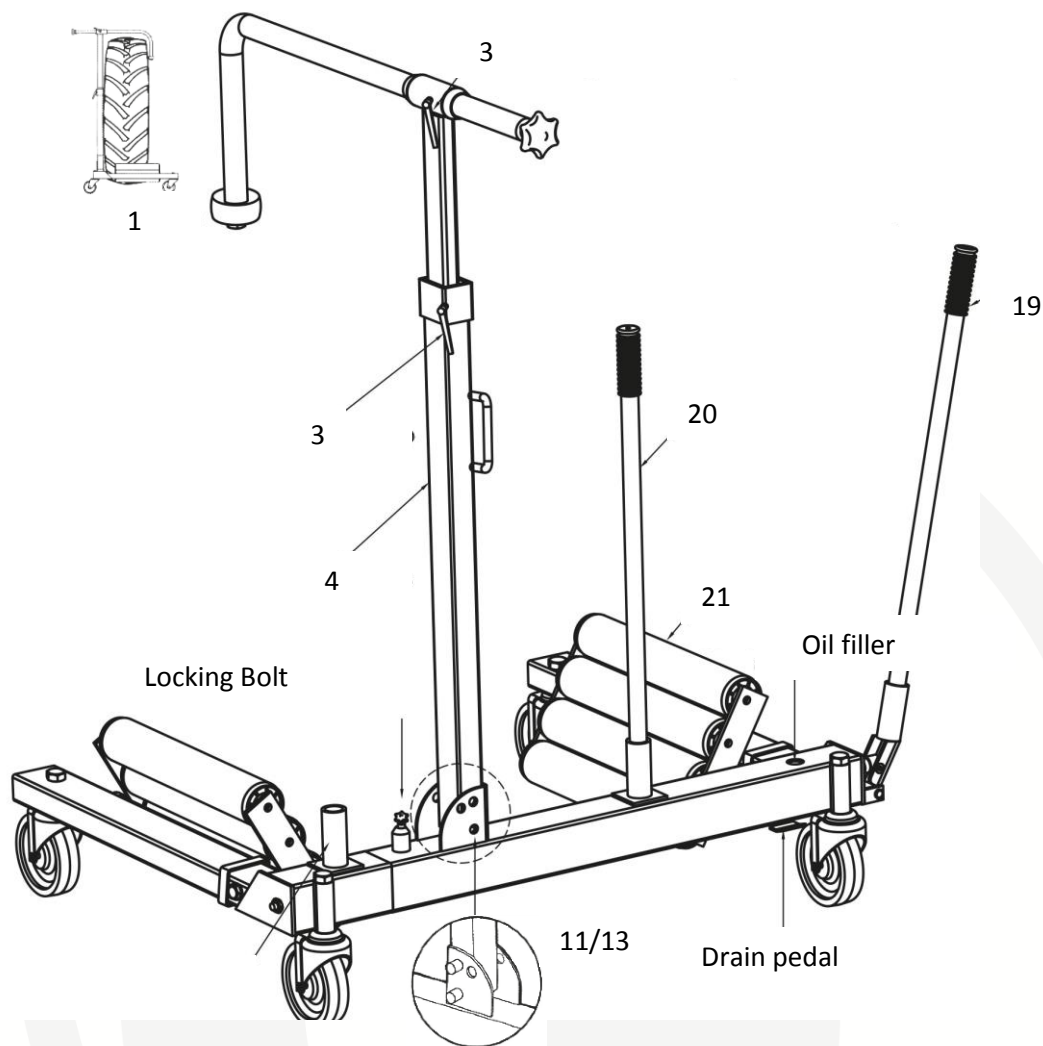


Figure 3

4.1. Preparation before first use

Before the first use of the mounting jack it is necessary to fill the hydraulic circuit.

4.2. Filling of the Hydraulic circuit



ATTENTION: When the oil level too low is and air in the hydraulic circuit can lead to a sudden slump of the load and endanger people and seriously injure them.

1. For filling, pump with the lever (19) the support rollers (21) in the widest position.
2. Open in this position the oil filler neck and fill the tank completely with hydraulic oil (quality = ISO VG15).
3. Close the oil filler neck again.
4. Finally tighten support rollers (21) by pressing the drain pedal again together.



ATTENTION: Never exceed the permissible loads and never step under a lifted wheel. Failure to comply April result in serious damage and serious injury!!!!

4.3. Lifting the tires

1. Set the tire mounting lifter with two supporting rollers (21) under your grip on the wheel blocked against the lowering vehicle or not mounted wheel.
2. Block the fixed bracket (7), so that it cannot lead to uncontrolled movements.
3. The wheel must fully rest against the guide tube.
4. Secure the wheel with the tire holder (1) in a vertical position.
5. The base must always be level and firmly have sufficient contact.



WARNING: Insufficient stability and incorrect positioning of the tire mounting lifter can lead to overturning.

For secure fixing of the wheel the tire holder (1) with two clamping screws (3) can be adjusted. Another adjustment is possible by tilting the guide tube (4) with the pin/ spring pins (11/13). When mounting the wheel of the pitch circle of the rim, by rotating the gear to supporting roles in front of the axle mounts.

4.4. Lowering of the tires

Let the load lifted off slowly and evenly. Avoid a jerky lowering. This protects the joints and the hydraulic unit and extends the life of the tire mounting lifter.



WARNING: Before draining, check that no tools or people under the suspended load. This could be pinched, damaged and badly injured.

1. Back up the castor wheel (7) to and check for unhindered operation of the vehicle.
2. Press until the tire reaches the desired height, the drain or pedal has been fully settled at the bottom.

5. Service and Maintenance

- Carrying out maintenance and repair work must be conducted only by qualified personnel.
- Pay attention to the originality of spare and the wear of parts.
- The implementation of maintenance and cleaning work and the correction of malfunctions are only permissible if the jack is lowered without load.
- In case the repair of paint is necessary, pay attention to the integrity and readability of all billboards and product signs must be replaced with original spare part.
- Fasteners must be regularly checked for tightness and, if necessary, be tightened.



CAUTION: Never perform various tasks simultaneously and not with several people.



WARNING: Failure to comply with the maintenance specifications can lead to serious accidents.



ATTENTION: Do not hold body parts between moving parts.



IMPORTANT: Failure to comply with lubrication service can cause damage to property and lead to impairments.

6. Storage and Transport

Always keep the tire assembly lifter in a dry and frost-proof room. Check the condition of the device before storage and perform maintenance check from before stopping, so that your device is ready for use quickly.

7. Disposal

The separate, environmentally friendly disposal of materials encourages recycling of recyclable materials. Therefore, after expiry of the normal service life of the unit itself and all related items such as lubricants, packaging and consumables to perform the collection of recycled material. Packaging, equipment and accessories are made of recyclable materials and must be disposed of accordingly.

Make sure that an old unit is rendered unusable before disposal.



WARNING: if you do not have the necessary expertise, consult an expert with the dismantling and disposal. POSSIBILITY OF INJURY!

!!! Always keep in mind the local regulations!!!

8. *Guarantee*

The warranty conditions of the company Wilhelm Fricke SE apply, which can be found in the sales documents and the current version of the Terms and Conditions.

For questions, please contact the company's customer service line

9. *Addresses*

**Sales / Customer Service line /
Spare Parts Service:**

Tel.: +49 (4281) 712 712
Fax: +49 (4281) 712 324

Postal and delivery address:

Wilhelm Fricke SE
Zum Kreuzkamp 7
D-27404 Heeslingen

10. *Imprint*

Original instructions for tire mounting lift. TX12002
importer: Wilhelm Fricke SE - D-27404 Heeslingen
1. Edition April 2017
©2017 Wilhelm Fricke SE
Reproduction, even in part, only with the written permission of Wilhelm Fricke SE.
All names of products mentioned in this manual are trademarks of their respective companies
Printed on paper made from chlorine and acid free bleached pulp